



Sinclair Hammelton

ASKING PRICE

£425,000

St. Marys Green

Biggin Hill, TN16 3RB

PROPERTY SUMMARY

Set on this quiet cul-de-sac location, this spacious three bedroom end of terrace family home has been modernised and tastefully decorated by the current owners. The property offers well proportioned accommodation, a generous kitchen/diner, four piece bathroom suite, landscaped south facing rear garden and a garage en bloc, providing secure parking or further storage. The property is an ideal first time family home purchase. EPC: D

Freehold
COUNCIL TAX - D
Construction - Traditional brick
Mains Services - Gas, Electricity and Water
Heating System - Gas
Broadband -
Mobile coverage -
Restrictive covenants -

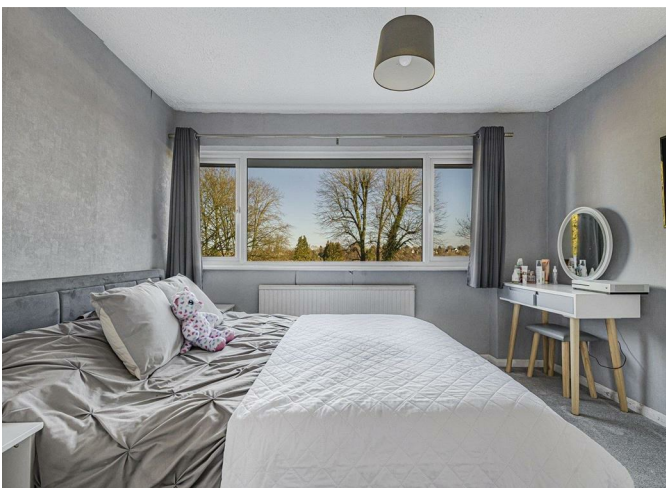
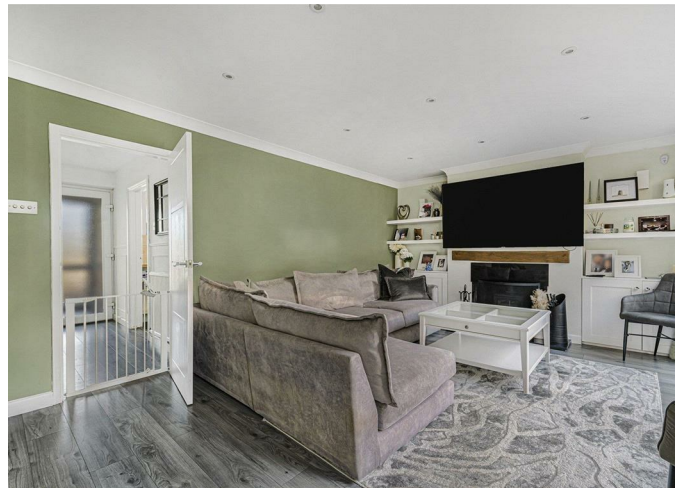
3



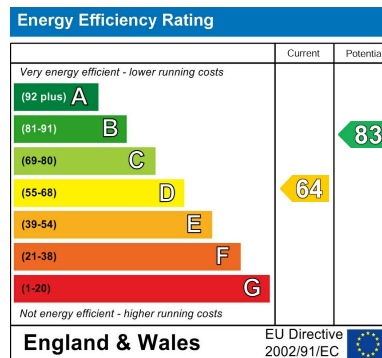
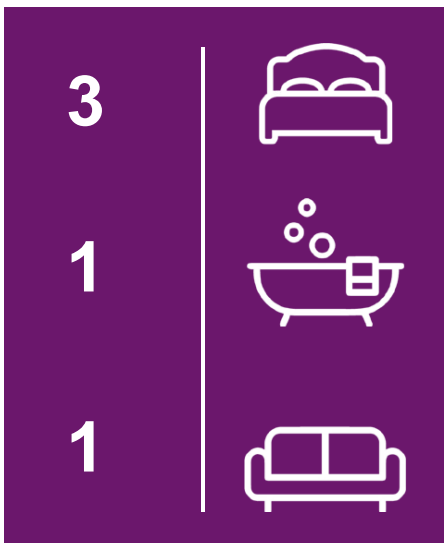
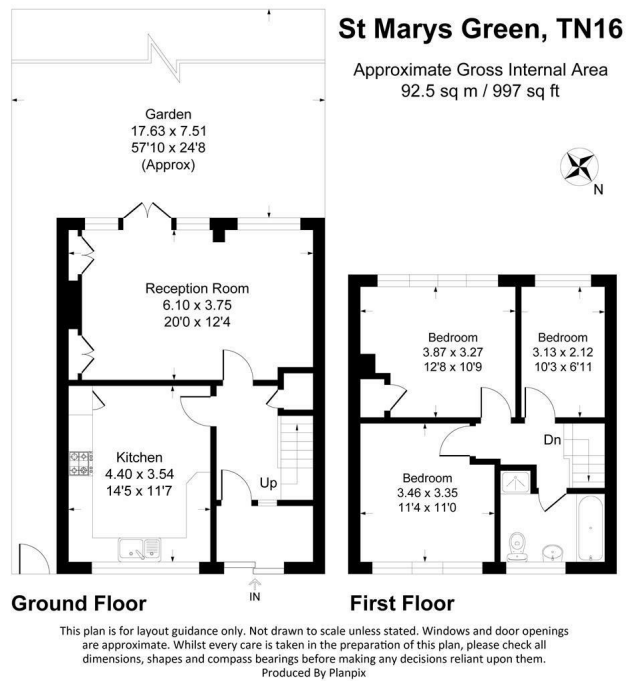
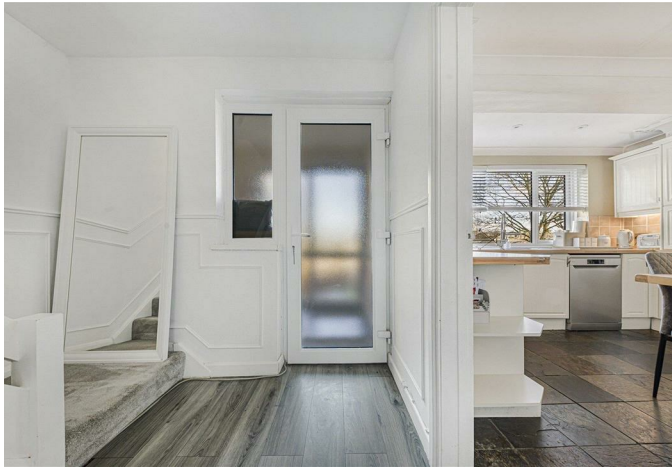
1



1







EPC RATING: D COUNCIL TAX BAND: D

Agents Note: Whilst every care has been taken to prepare these particulars, they are for guidance purposes only. All measurements are approximate and are for general guidance purposes only and whilst every care has been taken to ensure their accuracy, they should not be relied upon and potential buyers/tenants are advised to recheck the measurements

Sinclair Hammelton

OFFICE ADDRESS
1&2 The Grange
Westerham
Kent
TN16 7AH

OFFICE DETAILS
01959 587 460
infowh@sinclairhammelton